

# Overnight closures at Junction 10 (Luton) | M1

**From 8pm on Saturday until 2pm Sunday on:  
30 June 2007  
14 July 2007**

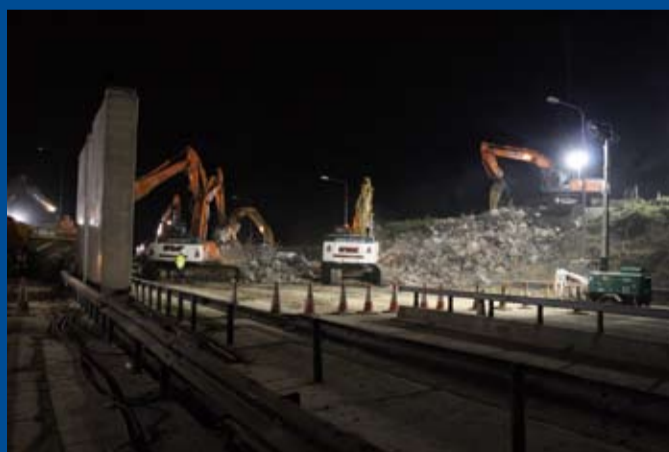
The M1 will be closed in both directions at Junction 10 (Luton) to allow safe demolition of the existing bridges.

**Long delays are expected and drivers are advised to seek alternative routes, or allow extra time for their journey.**

There will be a fully signed local diversion route for northbound and southbound traffic.

Drivers travelling north to Luton Airport should follow the local diversion route and access the airport via Junction 11. If you are travelling south to Luton Airport, you should not be affected by the diversion route.

**We apologise for any inconvenience this may cause.**



**Please call the Highways Agency Information Line  
on 08457 50 40 30 or visit [www.highways.gov.uk](http://www.highways.gov.uk)**

PR137/07